



# FIRE SAFETY TREE REMOVALS: Public Input

Parkland is seeking public input for a proposed replanting plan at the Yale & North Carleton Gate to provide a visual buffer and improve sound dampening while improving facility fire safety.

## Background

- Parkland is committed to addressing your concerns about the trees that were removed within our storage tank areas in late 2019.
- We have worked with a professional landscape architect and sought input from the City of Burnaby to determine some alternatives.
- We need your input to determine the final plan.

## Next Steps

- July 7 – Aug. 7: Public input to the alternatives and recommended solution.
- Aug. 7 – 14: Parkland review of public input and incorporation into plan.
- Sept. – Oct. : Replanting of trees and plants.

## CONTACT US

*We welcome your questions and feedback. Please don't hesitate to call or e-mail our **Community***

***Contact Line:***

***T: 604-257-4040***

***E: [prbcrefineryinfo@parkland.ca](mailto:prbcrefineryinfo@parkland.ca)***

*For more information about the Parkland Burnaby Refinery, visit [www.parklandcap.ca](http://www.parklandcap.ca)*

# Alternatives:

*Currently:*

View looking north from N Carleton & Yale St



**Goals:**

- Remediate sightlines
- Dampen sounds
- Improve aesthetics
- Improve safety
- Reduce combustibles at facility

**Preferred: Alternative 1**

Cedars on either side of gate



- ✓ Cedars good visual buffer
- ✓ Cedars dampen sound
- ✓ Reduces combustibles at facility

*Alternative 2*

Cedars and slats to block view



- ✓ Cedars good visual buffer
- ✓ Slats fair visual buffer
- ✗ Slats look "industrial"

*Alternative 3*

Cedars, slats and a new gate

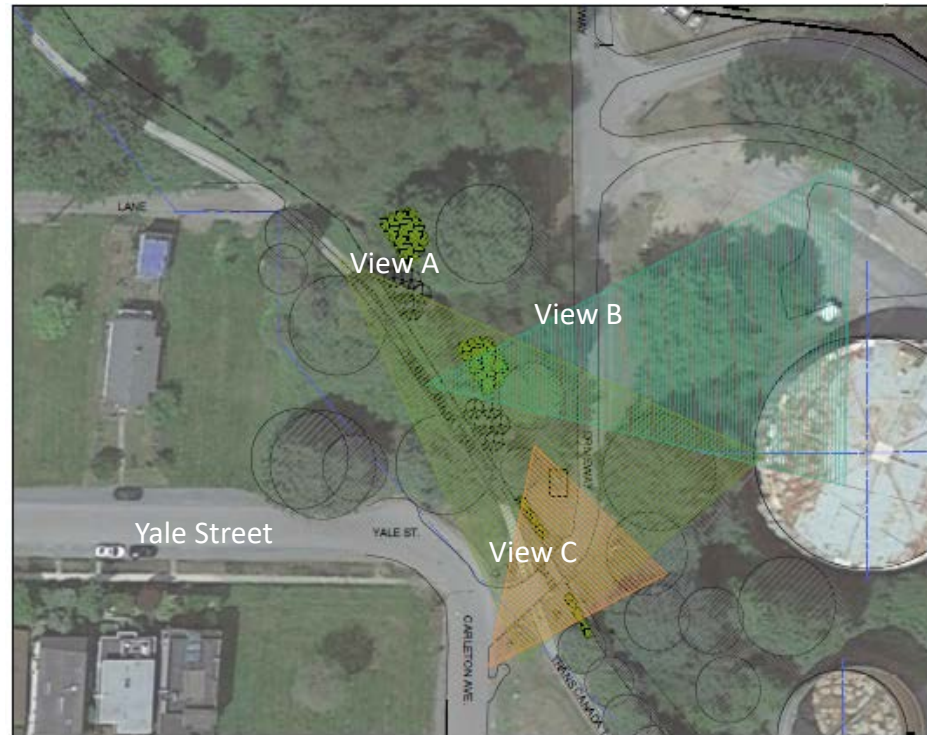


- ✓ Cedars good visual buffer
- ✓ Gate is a visual buffer
- ✗ Slats are unsightly
- ✗ Gate likely to attract graffiti



## Our Proposal

- After internal review, Parkland recommends alternative #1:
  - 12 cedars
  - 5 Douglas Fir
  - 5 Red Cedars
  - 24 Rhododendron
- Conceptual “before and after” views are shown on this slide



KEY PLAN - NTS

### View A



### View B



### View C

